

R4.0 (4X)

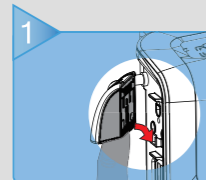
139.0



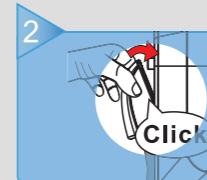
# Quick Reference Guide

## Troubleshooting

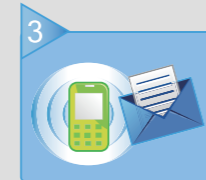
● Low Pressure  
● Power Failure



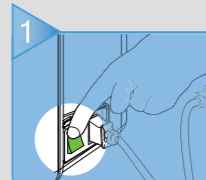
1 Check quick connector; make sure it's connected securely.



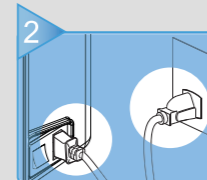
2 Contact for Tech Support



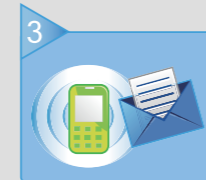
● Low Pressure  
● Power Failure



1 Check switch



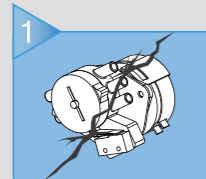
2 Check plug & power cord



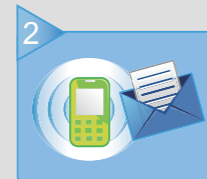
3 Contact for Tech Support

For Alternating model

● Low Pressure  
● Power Failure



1 Possible motor failure



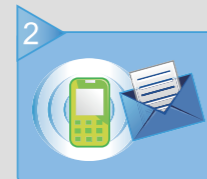
2 Contact for Tech Support

For Static model

● Low Pressure  
● Power Failure



1 Filter inspection required



2 Contact for Tech Support

kg  
▲ Max Weight:  
Static Mode : 200kg  
Therapeutic Mode : 180kg

### Function Guide

- Comfort level setting, refer to patient weight.
- Mode setting
- MaxFirm mode, with 20min. timeout
- Alternating mode (If Available)
- Static mode, constant pressure
- Seat Inflation mode, to slightly boost pressure when head raise up to 30°
- Pulsation mode, entire mattress decrease and increase pressure in every 15 seconds (If Available)
- Cycle Time selection (If Available)
- Alarm Mute
- Panel Lock  
Panel will lock automatically if untouched for 5 min., press 3 sec to unlock

Apex Medical Corp.

φ 6.0 Cutout

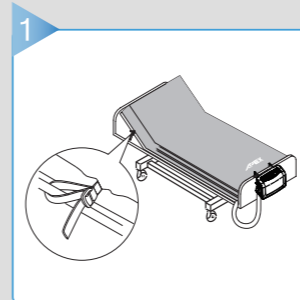
6.0

6.0

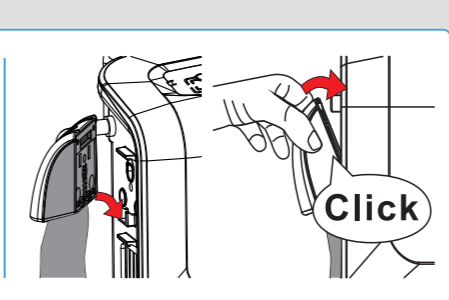
216.0

UNIT: mm

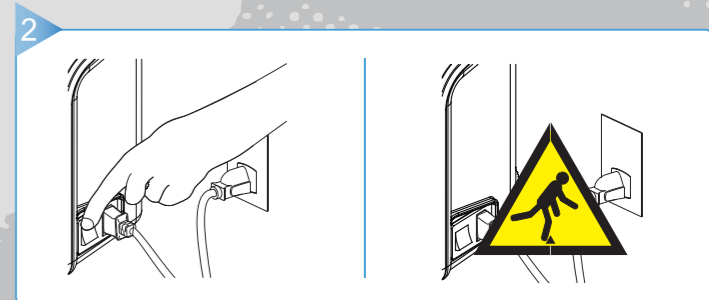
# Quick Reference Guide



1 Install



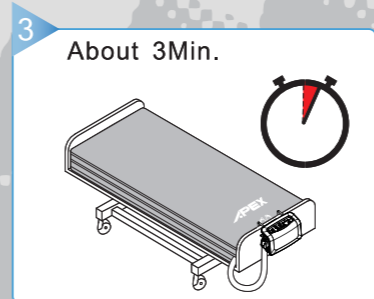
2 Connect the Quick Connector



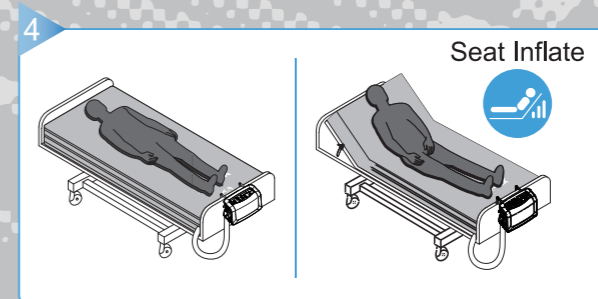
2 Plug In and Power On



Warning

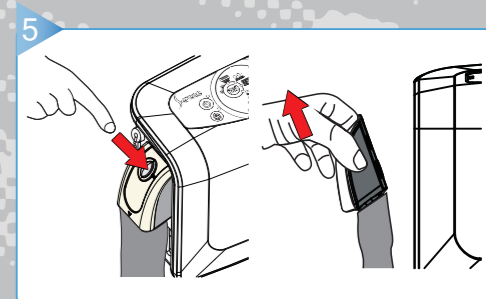


3 Inflate



4 Use after fully inflated.

In profile or tilt position, use "Seat Inflate" mode.



5 CPR

For detailed Operation instructions, Warning and Caution statements, refer to the User Manual. All rights reserved

792701-0000 V1.2

216.0

UNIT: mm