



Pro-care Auto

Alternating Pressure Redistribution System

- Suitable for patients in high to very high risk of pressure injuries
- Total dynamic in Cell-on-Cell air cells for enhanced comfort and stable support
- Alternating Low Pressure mode for an even higher comfort level to patients
- Deliberately crafted dual compressors system silently and continuously care for patients

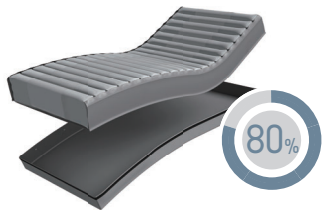




Pro-care Auto

Alternating Pressure Redistribution System

"Pro-care, perfectly comfortable"



80% of Time Saving
During decontamination, air cells with quick release detachable base can be easily removed from mattress



Non-Slip PU Base
Prevents mattress from slipping out the bed

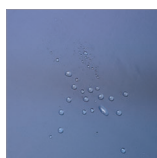


Anti-Sink QubiCell™
QubiCell™ on torso section and Cell-on-Cell structure which provide greater support for patients in sitting position

Micro Low Air Loss
Provide good ventilation and help reduce the accumulation of heat and moisture



4-way Stretch Cover
Reduced shear and low friction that further aids in pressure injury prevention. It's with welded seams that can prevent liquid from ingress into the mattress



- Low friction and shear
- Highly vapour permeable
- Water resistant
- High-flame retardant



4-Way Stretch



Vapour Permeable



Flame Retardant



Water Resistance



Waterproof Gadget
Preventing liquid from infiltrating inside of the mattress during decontamination

Built for Professionals

Pro-care Auto is designed to meet the clinical needs in healthcare facilities to aid in pressure care plan while improving patient's comfort level, this simple and durable system helps medical professionals to remain to be highly efficient even during their challenging daily tasks.



Soft & Comfort Air Cells

A perfect selection of materials to increase comfort level for patient and reduce the noise when patient's moving on the mattress

Heel Relief Function

Heel relief function at the last 5 air cells to prevent pressure injury from occurring on patient's heels



Auto Adjustment

Automatically provides an optimal pressure based on the patient's weight and position



Tuning Function

To fine-tune the pressure & optimize patient's comfort

Quiet Pump

Lower vibration from pump to enhance the better quality of patient care (<20 dBA)

A longer Lasting System Thanks to Dual Compressors

Having the capability of not only shortening mattress preparation time but also extending period of use

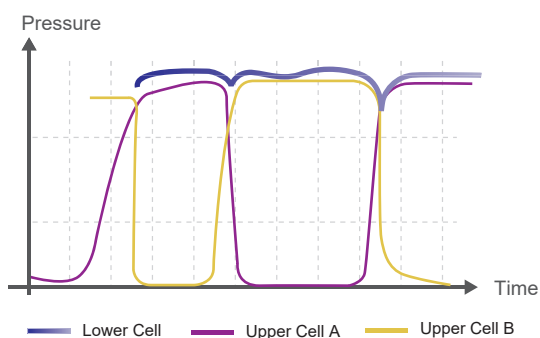
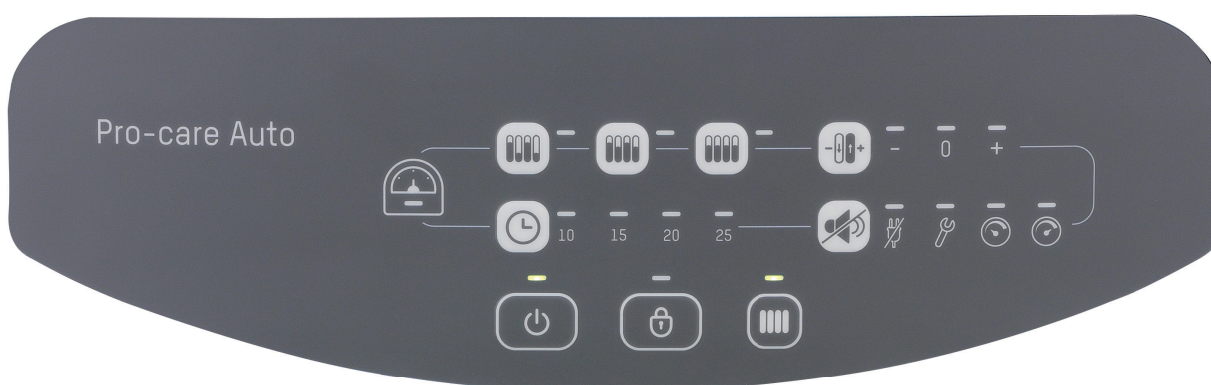
Graphic Design on The Panel

Easy-to-read display for a faster set-up

Quick Connector

Once with cap on, instantly switch to static air mattress for transportation need (12 hours)





Pressure mapping under Alternating Low Pressure mode

Total Dynamic

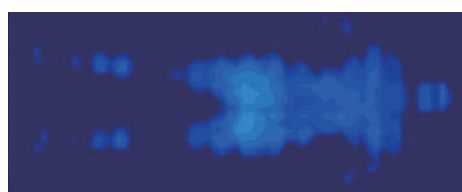
Dynamic pressure change also in the bottom of Cell-on-Cell air cells while being able to prevent patient from bottoming out during power failure for 8 hours

Alternating Low Pressure, A Mild Alternating

Newly designed function delivers moderate alternation for sensitive patients who seek a **greater comfort experience**

Four Cycle Time Options

Alternating and Alternating Low Pressure therapy can be set at 10, 15, 20 or 25 minutes cycle based on caregiver's clinical assessment and care plan



Pressure mapping under Alternating mode

Specifications

Model	Pro-care Auto		
Pump	Dimensions	34 x 13.5 x 20.5 cm	
	Weight	3.8 Kg	
	Case Material	Flame retardant ABS	
	Supply Voltage	AC 220 - 240V , 50Hz	
	Operating Cycle	10, 15, 20, 25 mins	
Mattress	5" Overlay/5+3" Replacement	8" Replacement	
	Dimensions	200 x 80/85/90 x 13 cm	200 x 75 / 80 / 85 / 90 / 100 x 20 cm 210 x 85 / 90 / 100 x 20 cm
	Cell Height	17 x 5" cells	20/21 x 8" cells (Cell - on - Cell)
	Weight	5.9 kg	10 kg
	Cover Material	4-way stretch PU / Polyester cover / Nylon PU quilted cover (Optional)	
	Cell Material	TPU	TPU
	Maximum Patient Weight	200 kg	250 kg
	Flame Retardant Standards	EN 597-1/597-2	EN 597-1/597-2

Specifications are subject to change for improvement without notice

