



((( AUTO SENSING )))

## Pro-care Auto Pediatric Alternating Pressure Redistribution System

- Suitable for patients in high to very high risk of pressure injuries
- TiniCell Technology provides stable support and a better user experience
- Professional care for a wide patient range by offering an excellent pressure relief through its extremely low pressure range
- Alternating Low Pressure therapy delivers a moderate alternating therapy and less perceived undulating feeling
- Deliberately crafted dual compressors system silently and continuously care for patients



**APEX**  
Wellell Group

# Pro-care Auto Pediatric

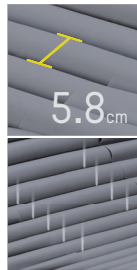
## Alternating Pressure Redistribution System

*"Pro-care, perfectly comfortable"*



### Patient Weight

Professional care for a wide patient range from 5- 95 kg by offering an excellent pressure relief through its extremely low pressure range



### TiniCell Technology

Empowers caregivers by providing an effective pressure relief while supporting the patient's body contour in any position to prevent patient from sinking in between two air cells

### Cell-on-Cell

The bottom cells act as basic pressure support in case of power failure for the system without extra foam base needed

### Micro Low Air Loss

Provide good ventilation and help reduce the accumulation of heat and moisture



### Waterproof Gadget

Preventing liquid from infiltrating inside of the mattress during decontamination



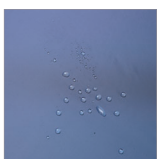
5.8 cm durable TPU air cells, the mattress provides long-term resistance to the regular disinfection process



**Quick Connector**  
Once with cap on, instantly switch to static air mattress for transportation need (12 hours)

### 4-way Stretch Cover

Reduced shear and low friction that further aids in pressure injury prevention. It's with welded seams that can prevent liquid from ingress into the mattress



- Low friction and shear
- Highly vapour permeable
- Water resistant
- High-flame retardant
- BS 7175 Crib 5 & Crib 7



4-Way Stretch



Vapour Permeable



Flame Retardant



Water Resistance



Wash Temperature



### Heel Relief Function

Heel relief function at the last 5 air cells to prevent pressure injury from occurring on patient's heels

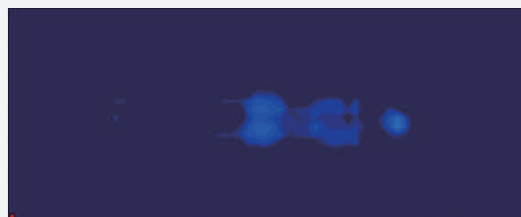


### Non-Slip Nylon PU Base

Prevents mattress from slipping out the bed

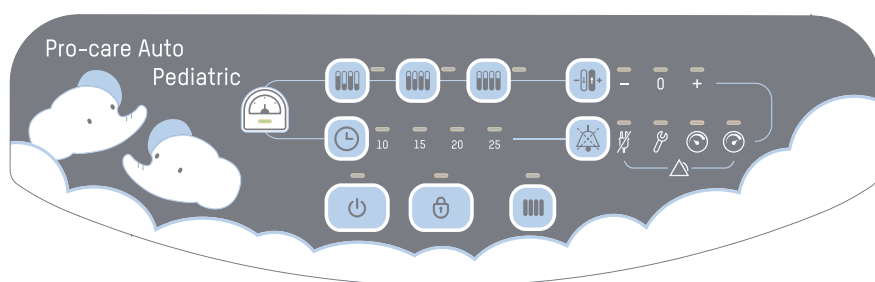
## Built for Professionals

Pro-care Auto Pediatric is designed to meet the clinical needs in healthcare facilities to aid in pressure care plan while improving patient's comfort level, this simple and durable system helps medical professionals to remain to be highly efficient even during their challenging daily tasks.



Pressure mapping under Alternating mode

Test Subject: User Height 112 cm, User Weight 19.5 kg, BMI 15.5 kg/m<sup>2</sup>



### Auto Adjustment

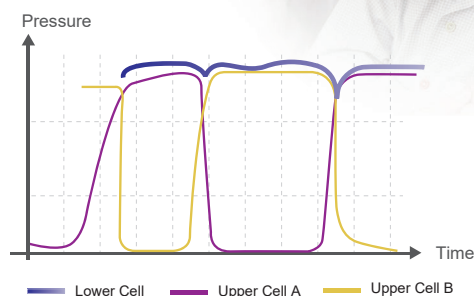
Automatically provides an optimal pressure based on the patient's weight and position

### Alternating Low Pressure, A Mild Alternating

Newly designed function delivers moderate alternation (including head section) for sensitive patients who seek a **greater comfort experience**

### Four Cycle Time Options

Alternating and Alternating Low Pressure therapy can be set at 10, 15, 20 or 25 minutes cycle based on caregiver's clinical assessment and care plan



### Total Dynamic

Dynamic pressure change also in the bottom of cell-on-cell air cells while being able to prevent patient from bottoming out during power failure for 8 hours

## Specifications

Model	Pro-care Auto Pediatric	
Pump	Dimensions	34.0 x 13.5 x 20.5 cm
	Weight	3.8 Kg
	Case Material	Flame retardant ABS
	Supply Voltage	220 - 240V / 50 Hz
	Operating Cycle	10, 15, 20, 25 min.
	Mattress	
Dimensions		140 / 150 x 65 / 70 x 18 cm
Cell Height		24/26 x 7" cells (Cell-on-Cell)
Weight		9.5 kg
Cover Material		4-way stretch PU / Polyester cover
Cell Material		TPU
Patient Weight Range		5-95 kg
Flame Retardant Standards		EN 597-1 & EN 597-2

Specifications are subject to change for improvement without notice