



## Pro-care Auto Bariatric Alternating Pressure Redistribution System

- Suitable for patients in high to very high risk of pressure injuries
- Total dynamic in Cell-on-Cell air cells for enhanced comfort and stable support
- Alternating Low Pressure mode for an even higher comfort level to patients
- Deliberately crafted dual compressors system silently and continuously care for patients

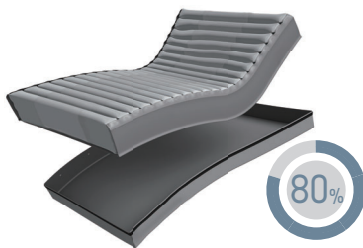




# Pro-care Auto Bariatric

## Alternating Pressure Redistribution System

*"Pro-care, perfectly comfortable"*



**80% of Time Saving**  
During decontamination, air cells with quick release detachable base can be easily removed from mattress



**Non-Slip PU Base**  
Prevents mattress from slipping out the bed

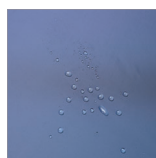


**Max Patient Weight**  
Newly designed mattress system can offer high comfort and stability to patient weighs up to 450 kg

**Micro Low Air Loss**  
Provide good ventilation and help reduce the accumulation of heat and moisture



**4-way Stretch Cover**  
Reduced shear and low friction that further aids in pressure injury prevention. It's with welded seams that can prevent liquid from ingress into the mattress



- Low friction and shear
- Highly vapour permeable
- Water resistant
- High-flame retardant



4-Way Stretch



Vapour Permeable



Flame Retardant



Water Resistance



**Waterproof Gadget**  
Preventing liquid from infiltrating inside of the mattress during decontamination

## Built for Professionals

Pro-care Auto Bariatric is designed to meet the clinical needs in healthcare facilities to aid in pressure care plan while improving patient's comfort level, this simple and durable system helps medical professionals to remain to be highly efficient even during their challenging daily tasks.

### Soft & Comfort Air Cells

A perfect selection of materials to increase comfort level for patient and reduce the noise when patient's moving on the mattress

### Heel Relief Function

Heel relief function at the last 5 air cells to prevent pressure injury from occurring on patient's heels

### Quiet Pump

Lower vibration from pump to enhance the better quality of patient care (<20 dBA)

### A longer Lasting System Thanks to Dual Compressors

Having the capability of not only shortening mattress preparation time but also extending period of use

### Graphic Design on The Panel

Easy-to-read display for a faster set-up

### Quick Connector

Once with cap on, instantly switch to static air mattress for transportation need (12 hours)



### Auto Adjustment

Automatically provides an optimal pressure based on the patient's weight and position

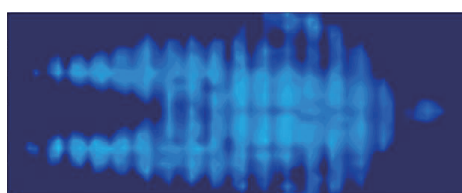
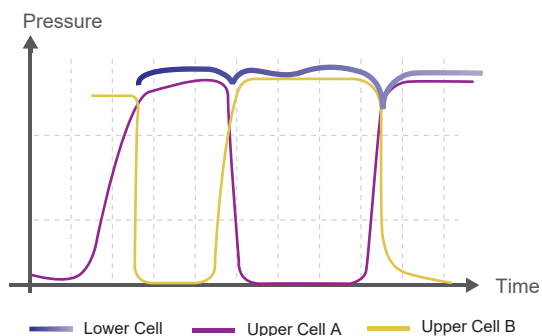
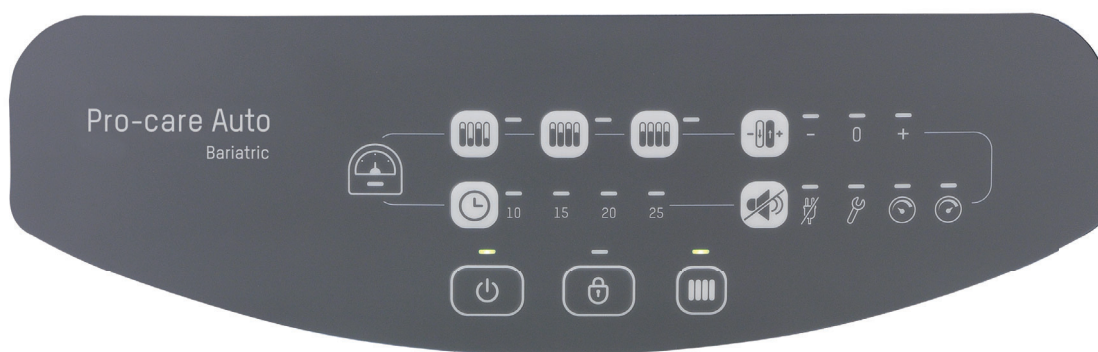
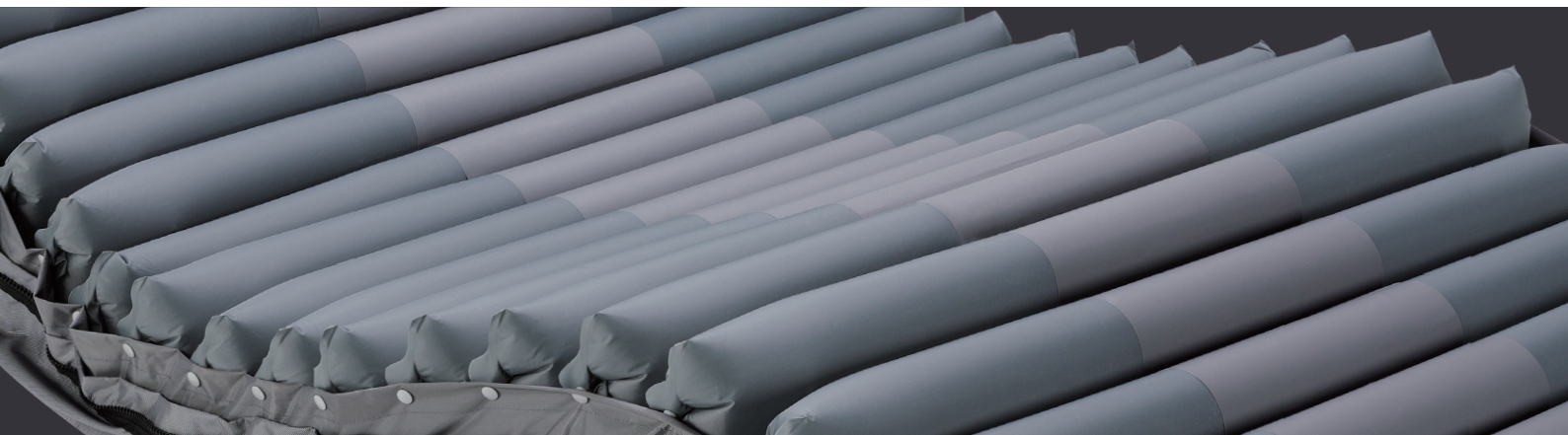


### Tuning Function

To fine-tune the pressure & optimize patient's comfort







Pressure mapping under Alternating Low Pressure mode

### Total Dynamic

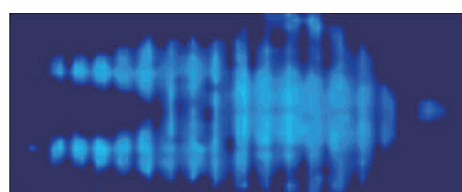
Dynamic pressure change also in the bottom of Cell-on-Cell air cells while being able to prevent patient from bottoming out during power failure for 8 hours

### Alternating Low Pressure, A Mild Alternating

Newly designed function delivers moderate alternation for sensitive patients who seek a **greater comfort experience**

### Four Cycle Time Options

Alternating and Alternating Low Pressure therapy can be set at 10, 15, 20 or 25 minutes cycle based on caregiver's clinical assessment and care plan



Pressure mapping under Alternating mode

## Specifications

Model	Pro-care Auto Bariatric	
Pump	Dimensions	34 x 13.5 x 20.5 cm
	Weight	3.8 Kg
	Case Material	Flame retardant ABS
	Supply Voltage	AC 220 - 240V , 50Hz
	Operating Cycle	10, 15, 20, 25 mins
Mattress	Bariatric 8" Replacement	
	Dimensions	200 x 107/122 x 20 cm
	Cell Height	20 x 8" cells ( Cell - on - Cell )
	Weight	13 kg
	Cover Material	4-way stretch PU / Polyester cover, Nylon PU quilted cover (Optional)
	Cell Material	Nylon PU
	Maximum Patient Weight	450 kg
	Flame Retardant Standards	EN 597-1/597-2

*Specifications are subject to change for improvement without notice*

