

HEADQUARTERS

Apex Medical Corp.
No. 9, Min Sheng St., Tu-Cheng,
New Taipei City, 23679, Taiwan
T +886 2 2268 5568
F +886 2 2268 6525
marketing@apexmedicalcorp.com

PAN-ASIA

TAIWAN
Apex Medical Corp.
No. 9, Min Sheng St., Tu-Cheng,
New Taipei City, 23679, Taiwan
T +886 2 2268 5600 /0800 054 133
F +886 2 2268 6526
customer@apexmedicalcorp.com

STURDY INDUSTRIAL

168, Sec.1, Zhongxing Road, Wugu District,
New Taipei City 24872, Taiwan
T +886 2 2981 5245
F +886 2 2984 8208
foreign@sturdy.com.tw
www.sturdy.com.tw

CHINA

Apex Medical (Kunshan) Corp.
No. 1368, ZiZhu Road, Kunshan,
Jiang Su Province, China
T +86 512 8617 1660 Ext 1150
F +86 512 8617 8663
customer.cn@apexmedicalcorp.com

INDIA

Apex Medicalcorp India Pvt. Ltd.
303, Third Floor Block 4A DLF
Corporate Park Phase-III,
Gurgaon, Haryana
T +91 11 6654 4138
F +91 11 6654 4052
enquiries.india@apexmedicalcorp.com

THAILAND

Apex Medical Thailand
65/100 Chamnanphenjati Business Center Bldg.
11/F Rama 9 Road, Huaykwang
Bangkok 10320
T +662 948 4848
F +662 948 4170
sales.thai@apexmedicalcorp.com

MIDDLE EAST • AFRICA

29, Misr Liltameer Building,
Stree#10, AREA#8, Sheraton Building
Heliopolis Cairo, Egypt.
T +202 2 2671303
F +202 2 2678649
raafat.wahby@apexmedicalcorp.com

PAN-EUROPE

SPAIN
Apex Medical S.L.
Elcano 9, 6ª planta 48008
Bilbao. Vizcaya. Spain
T +34 94 4706408
F +34 94 4706409
info@apexmedical.es

UK

Apex Medical Limited
Unit 21, Optima Park, Thames Road,
Crayford, Kent DA1 4QX
T +44 (0) 132 2520 560
F +44 (0) 132 2554 182
enquiry@apexmedicalcorp.co.uk

FRANCE

Apex Medical France
4 Boulevard de la Chanterie
49124 Saint-Barthelemy d'Anjou
France
T +33 2 72 79 27 13
F +33 2 85 73 07 67
info.france@apexmedicalcorp.com

GERMANY

SLK Vertriebsgesellschaft GmbH
Lindenhorster Straße 38-40 44147
Dortmund
T +49 (0)231-925360-175
F +49 (0)231-925360-29
info@slk-gmbh.de
www.slk-gmbh.de

AMERICAS

USA
Apex Medical USA
927 Mariner Street,
Brea, CA 92821, USA
T +1 714 671 3818
F +1 714 494 8173
sales.usa@apexmedicalcorp.com



Flexi-Air

Non-powered Hybrid Mattress

- Suitable for patients in medium to high risk of pressure injuries
- Patented hybrid cell design for efficient air displacement
- Top cover with high MVTR for better cooling effect and comfort
- Triangular cut heel section for greater heel pressure reduction



Distributed by



Flexi-Air

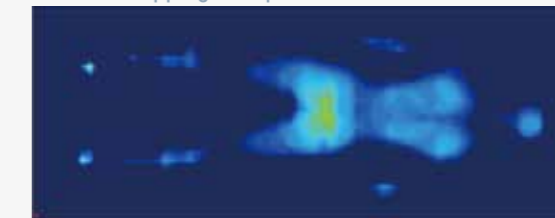
Non-powered Hybrid Mattress

"Perfect Combination of Air And Foam"

The Non-powered Hybrid System

The Flexi-air is a true Hybrid mattress replacement that combines foam with intelligent air cells for effective pressure redistribution and greater comfort

Pressure Mapping in Supine Position



Patient: male, 73kg/ PRI: <32mmHg= 96.37%

-  **4-Way Stretch**
-  **Vapour Permeable**
-  **Flame Retardant**

4-way Stretch Cover

- Low friction and shear
- Vapour permeable, water resistant
- High-flame retardant





4 Carry Handles
Easily lift up and transport



Non-Slip PU Base
Prevents mattress from slipping out the bed

Ventilated Head Pillow Zone
To enhance patient comfort

Side Bolsters with Grooves

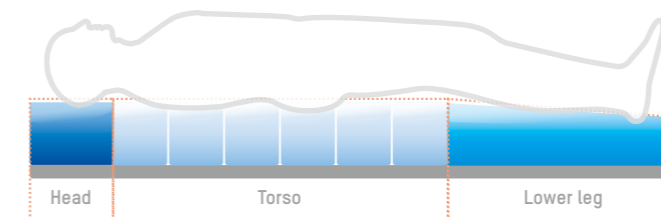
- U/V shape grooves offer support and stability when ingress and egress
- Compatible with profiling beds

2 Foam Layers in 1 Air Cell

- Foam of upper layer helps reduce heat (head/heel section) and aid with patient comfort
- High-resilience foam of lower layer provides stable support

Automatic Air Displacement
The hybrid system will automatically displace air and regulate the pressure in the aligned cells to give greater comfort and effective pressure redistribution

Non-woven Cover of Heel Cells
Easily to maintenance and reduces the risk of cross infection

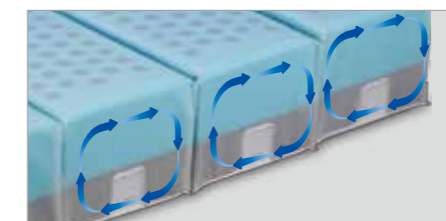


Immersion and Envelopment

3 pressure zones consist of hybrid cells and foam with patented cutting design which provides superior comfort and pressure reduction



Slope leg section with patented triangle cut
Individual cells of foam with patented triangle cut increase point-to-point support at the heel



Immersion without Bottoming Out

Each hybrid cell is made of foam inside an air cell. The air in the cell supporting most of the load and evenly redistribute interface pressure while the foam preventing patient from bottoming out

Specifications

Model	Flexi-Air
Dimensions	200 x 80 x 20 cm 200 x 85x 20 cm 200 x 90 x 20 cm
Weight	12 Kg
Cell Height	6 x 13 cm, PU foam in TPU hybrid cells
Side Bolster	20 cm side bolster
Top Cover	High MVTR* 4 Way Stretch PU
Bottom Cover	Non-Slip PU Polyester
Flame Retardant Standards	BS 7177 crib 2, EN 597-18-2, BS 5852
Maximum Patient Weight	200 Kg

*MVTR: Moisture vapor transmission rate
Specifications are subject to change for improvement without notice