

# iX Series

## Improving CPAP therapy experience for better sleep quality.

Obstructive sleep apnea (OSA) affects 1.5 billion people globally and often goes undiagnosed and untreated. Untreated OSA significantly increases an individual's risk of developing severe chronic physical and mental health complications and cardiovascular disease-related morbidity and mortality. It also reduces the quality of life due to diminishing relationships, excessive daytime sleepiness, workplace errors and productivity loss, traffic accidents, and healthcare costs and liabilities.<sup>1-3</sup>

Continuous positive airway pressure (CPAP) therapy is the most effective OSA intervention. CPAP helps improve quality of life and avoid the hefty financial burden, including chronic cardiovascular disease medication, emergency visitation and hospitalization days, excessive days-off-work, decreased workplace performance, and acquired fees from occupational and personal accidents and injuries.<sup>4</sup>

iX Series's auto-detection for user breathing behavior, small footprint, and intuitive user interface make adopting ongoing continuous positive airway pressure (CPAP) treatment for OSA easy and quick for users to see improvement in therapy outcomes. iX Series is compatible with Wellell's digital health service, SleepWell, which supports care provider remote-monitoring and patient self-monitoring.



### Automate diagnostics and pressure adjustments

**Autoset algorithm** enables iX to automatically initiate device modes based on the user's breathing behaviour. Upon detecting the user's inspiration, iX switches to therapy mode and into standby mode after brief inactivity, simplifying the therapy process across all levels of users.

**Flow limitation algorithm** monitors and auto-adjusts pressure level and humidity during therapy sessions, allowing iX to ensure users stay comfortable and asleep for a good night's rest. Auto-adjustment provides a gentle breathing environment to help the user drift into sleep.

### Personalize the comfort experience

iX's high compatibility with a wide range of sleep masks, such as full masks, nasal masks, and nasal pillow masks, offers flexibility in customizing the user experience, including incorporating humidity during treatment to reduce dryness, discomfort, and nasal congestion.

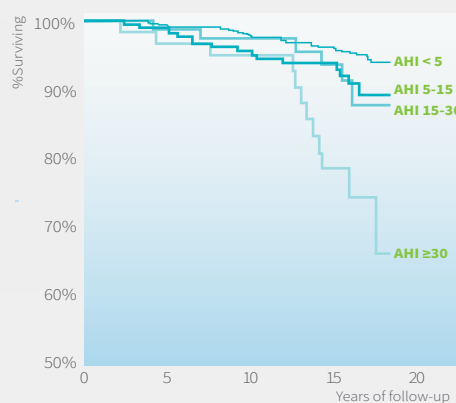
### Enjoy high-sleep quality on-the-go

iX is a reliable companion for frequent travellers with its compact design, ensuring access to high-quality sleep. Paired with SleepWell, users can stay informed on their therapy progress via mobile app that provides session score breakdowns and coaching resources.

# Clinical Benefits

CPAP therapy significantly decreases severe OSA patients' cardiovascular disease-related mortality risk by 5.2-folds and morbidity risk, general mortality risk by 4.8-folds, and comorbidity-related complications such as coronary heart disease by 70.8%.<sup>5,6</sup>

Improving treatment experience with comfortable sleep masks increases long-term CPAP therapy compliance. Sleep masks that keep eyesight clear, noise-disturbance free, easily adjustable to prevent pressure markings on the skin, and convenient to wear and maintain, significantly increase patients' desire to continue CPAP therapy.<sup>7</sup>



Estimated probability of survival for OSA patients treated with CPAP therapy.<sup>5</sup>

- Benjafield AV, Ayas NT, Eastwood PR, Heinzer R, Ip MSM, Morrell MJ, Nunez CM, Patel SR, Penzel T, Pépin JL, Peppard PE, Sinha S, Tufik S, Valentine K, Malhotra A. Estimation of the global prevalence and burden of obstructive sleep apnoea: a literature-based analysis. *Lancet Respir Med*. 2019 Aug;7(8):687-698. doi: 10.1016/S2213-2600(19)30198-5. Epub 2019 Jul 9. PMID: 31300334; PMCID: PMC7007763.
- Romero-Corral A, Caples SM, Lopez-Jimenez F, Somers VK. Interactions between obesity and obstructive sleep apnea: implications for treatment. *Chest*. 2010 Mar;137(3):711-9. doi: 10.1378/chest.09-0360. PMID: 20202954; PMCID: PMC3021364.
- Knauer M, Naik S, Gillespie MB, Kryger M. Clinical consequences and economic costs of untreated obstructive sleep apnea syndrome. *World J Otorhinolaryngol Head Neck Surg*. 2015 Sep 8;1(1):17-27. doi: 10.1016/j.wjorl.2015.08.001. PMID: 29204536; PMCID: PMC5698527.
- Morsy NE, Farrag NS, Zaki NFW, Badawy AY, Abdelhafez SA, El-Gilany AH, El Shafey MM, Pandi-Perumal SR, Spence DW, BaHammam AS. Obstructive sleep apnea: personal, societal, public health, and legal implications. *Rev Environ Health*. 2019 Jun 26;34(2):153-169. doi: 10.1515/reveh-2018-0068. PMID: 31085749.
- Young T, Finn L, Peppard PE, Szklo-Coxe M, Austin D, Nieto FJ, Stubbs R, Hla KM. Sleep disordered breathing and mortality: eighteen-year follow-up of the Wisconsin sleep cohort. *Sleep*. 2008 Aug;31(8):1071-8. PMID: 18714778; PMCID: PMC2542952.
- Streatfeild J, Hillman D, Adams R, Mitchell S, Pezzullo L. Cost-effectiveness of continuous positive airway pressure therapy for obstructive sleep apnea: health care system and societal perspectives. *Sleep*. 2019 Dec 24;42(12):zsz181. doi: 10.1093/sleep/zsz181. PMID: 31403163.
- Weaver TE, Maislin G, Dinges DF, Younger J, Cantor C, McCloskey S, Pack AI. Self-efficacy in sleep apnea: instrument development and patient perceptions of obstructive sleep apnea risk, treatment benefit, and volition to use continuous positive airway pressure. *Sleep*. 2003 Sep;26(6):727-32. doi: 10.1093/sleep/26.6.727. PMID: 14572127.

Specifications	iX Auto	iX Sense	iX Fit
Operation Mode	CPAP / APAP	CPAP	CPAP
SleepWell Compatibility	Standalone / Online: Web & App		—
Dual Downloading Ports	SD card / USB cable		—
Efficacy Reporting	Yes		—
Low Pressure Alarm	Yes		—
Altitude Adjustment	Auto		—
Pressure Range	4.0 to 20.0 cmH <sub>2</sub> O, iX Auto: 0.2 cmH <sub>2</sub> O increment, iX Sense & iX Fit: 0.5 cmH <sub>2</sub> O increment		
Ramp Time	0 – 45 minutes, 5 minute increment		
Ramp Starting Pressure	4 cmH <sub>2</sub> O		
Water Chamber Capacity	300 ml		
Heated Humidifier	6 levels setting		
Sound Noise Level	Less than 28 dB (A)		
Safety Classification	Type BF, Class II, IPX2		
Power Supply	100 – 240 V / 50 – 60 Hz, Universal power supply		
Device Weight	0.9 kg / 2 lbs w/o humidifier; 1.49 kg / 3.3 lbs w/ humidifier		
Device Dimension	14.1 x 14.5 x 10.6 cm / 5.5 x 5.7 x 4.1 in w/ humidifier; 23.5 x 14.5 x 14.7 cm / 9.2 x 5.7 x 5.7 in w/o humidifier		

